



Portage
Regional
Economic
Development

QUARTER 4
REPORT
2025



WE ARE INVESTMENT-READY

INSIGHTS ON SUSTAINING OUR ECONOMIC GROWTH

P
R
E
D

**SHAPING THE FUTURE OF AGRI-FOOD
DEVELOPMENT**

ADVANCING OUR REGION

**IMPACTFUL PARTNERSHIPS WITH
INDIGENOUS ECONOMIC
DEVELOPMENT**

PURPOSEFUL MOMENTUM

**EMERGING TRENDS IN ELEVATED
DATA & ONLINE TRAFFIC**

INVESTMENT ATTRACTION IN ACTION

WWW.INVESTINPORTAGE.CA



FROM THE DIRECTOR OF ECONOMIC DEVELOPMENT



INVESTINPORTAGE.CA

In the last quarter of 2025, PRED continued to focus on economic development for the Region of Portage la Prairie. Our work for this quarter was focused on attracting investment, supporting local businesses, and creating opportunities for growth through holistic economic development best practices. Several important projects aligning with our the PRED, Tourism and Industrial Strategy moved forward, allowing PRED to continue building a Region of Investors and Visitors choice.

One key initiative was the By-Product Availability and Usage Opportunities Project with the Food Development Centre. This project is helping local industries find new ways to use by-products, creating value and reducing waste. This allows for synergies to be identified and helps with investment attraction efforts. We also supported the Prairie Unity Pow Wow, a historic event that brought people together, and supported reconciliation.

We focused efforts on building capacity, and the Dakota Tipi Business Workshop is an example of one of the initiatives in Q4 that provided practical support for Indigenous entrepreneurs, helping build a stronger and more inclusive economy.

We represented the region at the Bridge2Food North America Conference, gaining insights into sustainable food production and alternative proteins areas that are shaping the future of agri-food. The Portage Regional Tourism Committee also saw growth through partnerships and digital storytelling, which aligns with our vision to be a premier destination in Manitoba.

To guide future planning, we completed a Socio-Economic Impact Assessment with Deloitte and the Portage Local Immigration Partnership. This study provides tools and insights to support investment and immigration planning, and an innovative tool to measure economic and social impact when attracting large industries to the Region, ensuring we are building a solid foundation.

Looking ahead at 2026, PRED will continue to use data-driven strategies and collaboration to keep the Region of Portage la Prairie ready for investment and long-term growth.

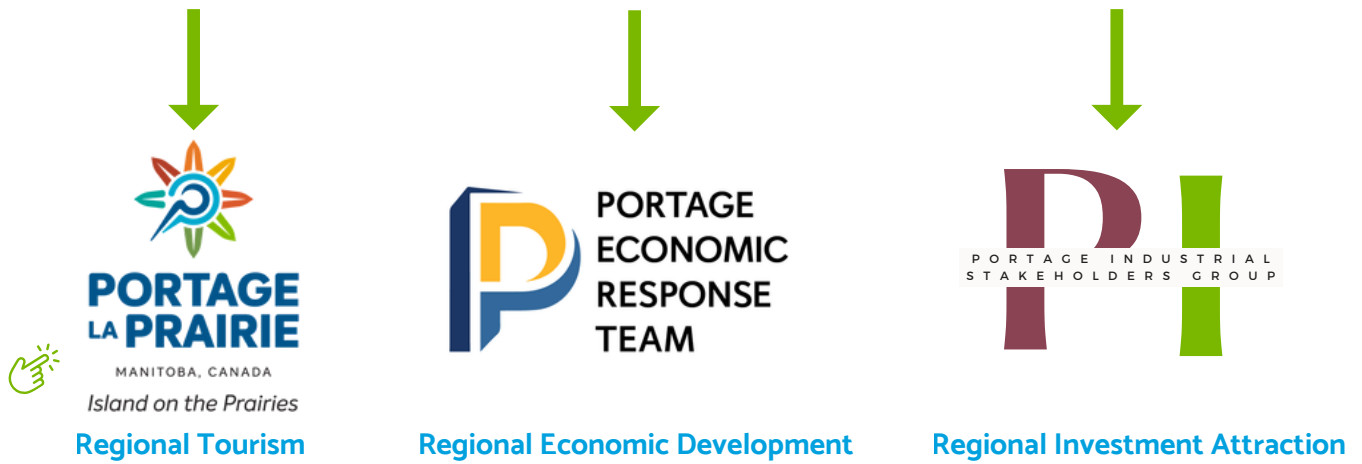


-Eve O'Leary

PRED: WHAT WE DO



Portage Regional Economic Development



PRED is a not-for-profit economic development agency that manages economic development initiatives for the City and RM of Portage la Prairie.

It is through this joint venture that our Region is flourishing and has developed a sophisticated and unique concierge process to create the regional approach model for Economic Development.

PRED Services



PRED: WHO WE ARE



EVE O'LEARY: DIRECTOR OF ECONOMIC DEVELOPMENT

Eve O' Leary joined the PRED team in December 2019. With over 17 years of business experience working at large international companies and Municipalities, Eve is an accomplished Economic Development Professional that brings a wealth of Economic Development experience and business management knowledge to the organization. Eve can be reached via email at eoleary@investinportage.ca



INEMESIT ADENIYI: ECONOMIC DEVELOPMENT COORDINATOR

Inemesit Adeniyi joined PRED in March 2022 and is the Economic Development Coordinator. With over 18 years of experience in project management, customer care, office administration, marketing, and salesmanship, she is an invaluable asset to the organization. She is dedicated to helping her community thrive one business, one project and one relationship at a time. Inem can be reached at iadeniyi@investinportage.ca



CALLIE MCARTHUR: TOURISM & MARKETING COORDINATOR

Callie McArthur joined PRED in May 2025 as the Tourism and Marketing Coordinator. With a decade of experience in sales, storytelling, and a knack for making local magic happen, Callie brings big ideas and small-town pride to everything she does. Whether she's planning a can't-miss event, creating scroll-stopping content, or helping visitors fall in love with the prairies, she's all in. Fueled by coffee and community spirit, Callie can be reached at cmcarthur@discoverportagelaprairie.ca

PRED: HOW WE OPERATE

Our Board of Directors plays a vital role in guiding the economic development efforts of the region.



Roy Tufford
Chairperson



Faron Nicholls
Vice-Chairperson



Colin Doyle
Board Member

With representatives from the City and RM of Portage la Prairie, along with local community members, the Board helps shape strategic priorities, provides oversight on key initiatives, and ensures alignment with local needs and opportunities.



Preston Meier
Board Member



Ryan Kontzie
Board Member



Garth Asham
Board Member



Lucy Kinnear
Board Member



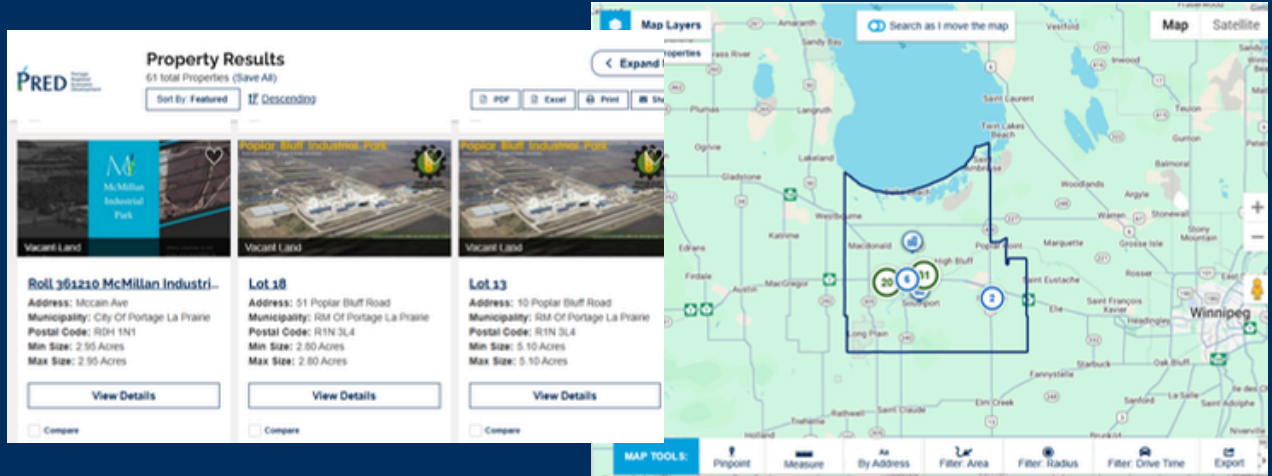
Nathan Peto
Board Member

Their leadership supports our mission to drive growth, investment, and long-term sustainability throughout the region.

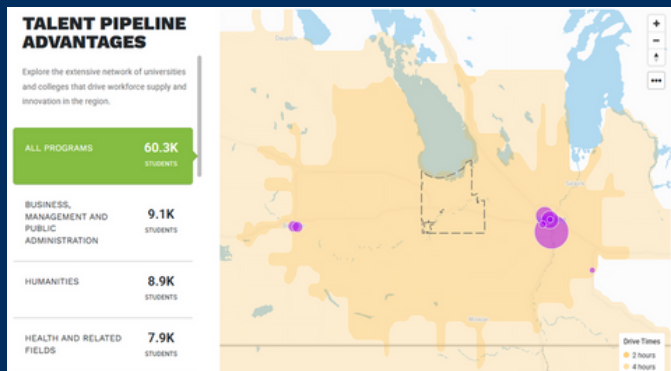
STREAMLINED DATA

The investinportage.ca website features updated data, interactive site selection tools, community profiles, and a brand-new regional land inventory for commercial and industrial property in the Region of Portage la Prairie.

REGIONAL LAND INVENTORY



COMMUNITY DATA

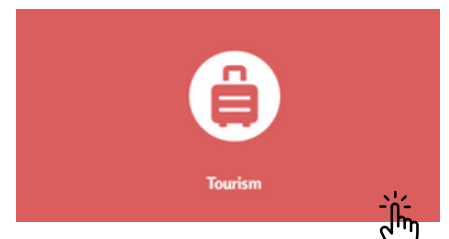
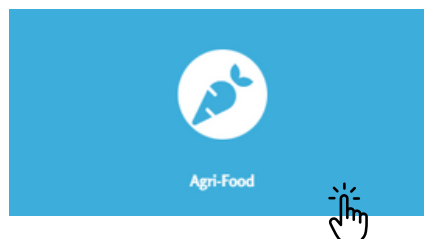
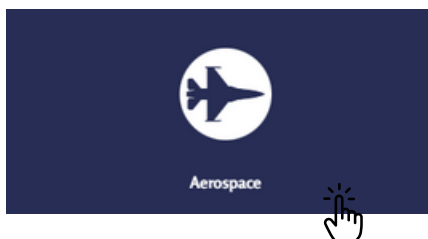


STUDIES, STRATEGIES, & REPORTS



CONNECT WITH THE PRED TEAM TODAY FOR **ECONOMIC INDICATOR DATA** PERTAINING TO THE REGION OF PORTAGE LA PRAIRIE.

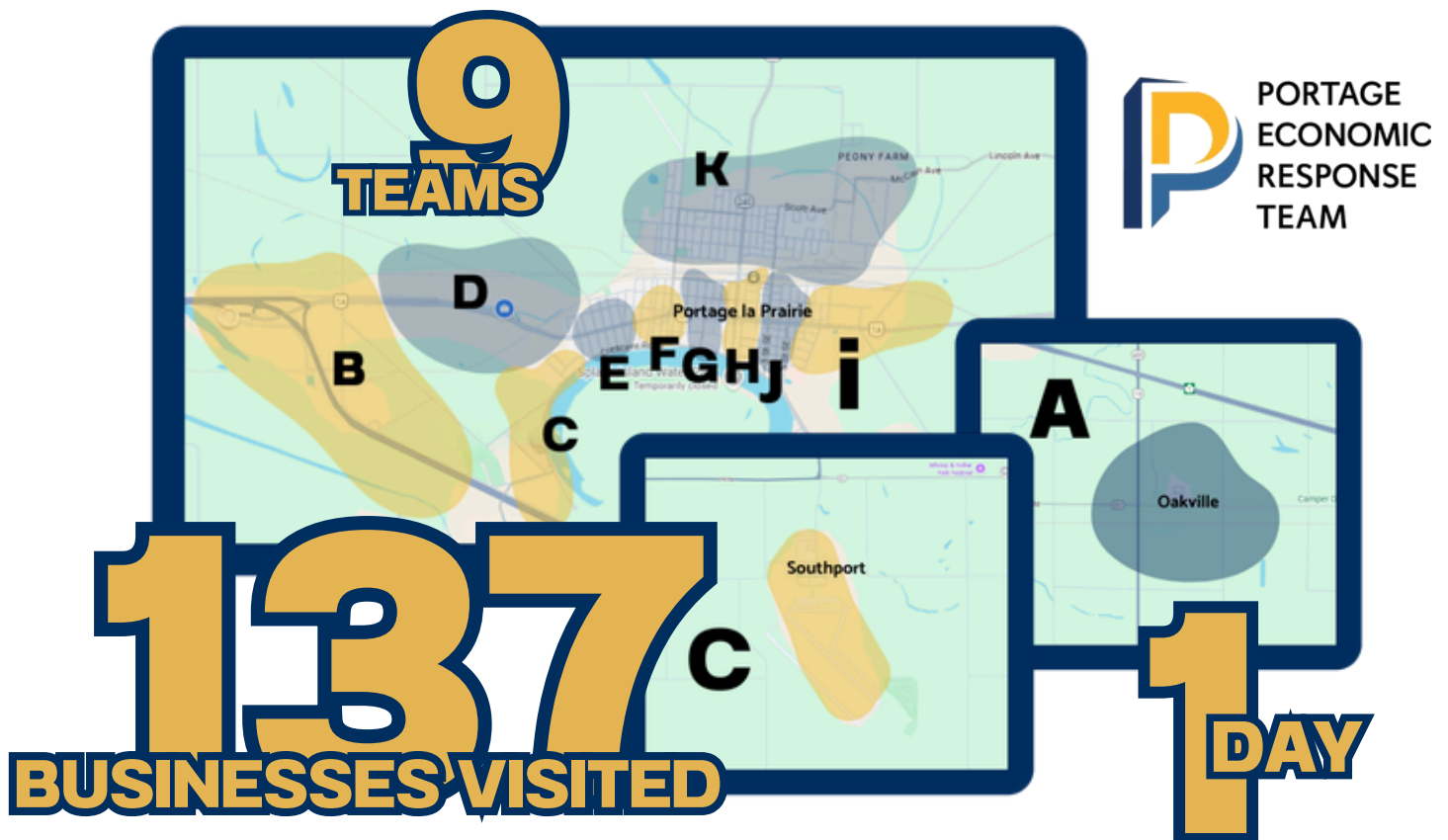
The Region has 6 Targeted sectors - each has thier own economic data section



BUSINESS WALKS

2025 UPDATE ON THE REGION OF PORTAGE LA PRAIRIE

The Portage Economic Response Team (PERT) completed the Regional Business Walks, continuing an annual initiative designed to gather direct, on-the-ground feedback from local businesses across the Region of Portage la Prairie. On September 29, 2025, multi-agency teams visited more than 135 businesses, engaging in in-person conversations to better understand current conditions, challenges, and opportunities. This map displays Zones A - K that PERT visited.



*Feedback is collected confidentially and reported only in aggregate, allowing businesses to speak openly while providing reliable insights to inform planning and priorities.

FOLLOW-UP ACTIONS, RESOURCES, AND COMMUNICATIONS FROM PERT WILL CONTINUE THROUGHOUT 2026, WITH THE NEXT ROUND OF REGIONAL BUSINESS WALKS PLANNING ALREADY UNDERWAY.

PRED IS FEELING PROUD

We are so proud to share that Inemesit Adeniyi, Economic Development Coordinator at PRED, achieved the Project Management Professional (PMP) designation in 2025. The PMP is a **globally recognized certification** awarded by the Project Management Institute (PMI), signifying excellence in project management and leadership, which Inem demonstrates in her role daily.

Inemesit Adeniyi MBA, PMP

Economic Development Coordinator

Phone: 204-903-7293 email: iadeniyi@investinportage.ca



BY-PRODUCT AVAILABILITY & USAGE OPPORTUNITIES PROJECT

As part of Portage Regional Economic Development's continued investment attraction efforts and in alignment with the Industrial Development Strategy, PRED formally advanced the By-Product Availability and Usage Opportunities Project in Q4, delivered in partnership with the Food Development Centre (FDC).



This initiative is focused on identifying and showcasing opportunities to maximize the value of by-products generated across local and regional processing sectors. By mapping available by-products and exploring their potential applications across food, feed, agricultural, industrial, and other value-added uses, the project aims to position the Region of Portage la Prairie as a leader in circular economy innovation and sustainable industry practices.



During Q4, the project progressed from design and scoping into early implementation. A targeted outreach approach was initiated, with a limited number of regional industrial stakeholders invited to participate in the initial assessment phase. This engagement is intended to support participating industries in gaining early insight into potential synergies, exploring collaboration opportunities, and contributing to a robust regional data set that will inform future investment attraction and diversification efforts.


DATA COLLECTION AND ANALYSIS WILL CONTINUE INTO THE NEXT PHASE, WITH FURTHER REPORTING AND VISUAL OUTPUTS TO FOLLOW AS THE PROJECT ADVANCES.




TAKE A BEHIND-THE-SCENES LOOK AT THE FOOD DEVELOPMENT CENTRE!

 [Click here to watch](#) Welcome and Intro to Manitoba's Food Development Centre


CLICK TO VIEW VIDEO TOURS OF:

 Food Lab showcasing Product Development, Ingredient Applications and Bench-Scale Protein Extraction

 Pilot Plant

 Plant-based Protein and Alternative Protein Capacity

 Drying and Preservation Technologies

 Analytical and Microbiology Laboratories showcasing Sensory Evaluation

SUSTAINABLE AGRI-FOOD DEVELOPMENT

ADVANCING OUR REGION

BRIDGE2FOOD NORTH AMERICA

In October, our Director of Economic Development, Eve O’Leary, attended the Bridge2Food North America Conference, a three-day event bringing together 400+ leaders from across the sustainable and alternative protein industry. The conference convened innovators, researchers, manufacturers, and policy influencers from across North America and beyond, creating a high-impact forum for learning, strategic dialogue, and collaboration.



The program explored the evolving future of sustainable food production, with a focus on plant-based, cultivated, and fermentation-derived proteins. Sessions emphasized environmental sustainability, global food security, and the importance of collaboration between industry, academia, and policy-makers to move innovation from research into commercial and scalable solutions.

Additional sessions examined regenerative agriculture, supply chain resilience, ingredient optimization, and emerging processing technologies. Industry case studies and executive discussions offered insight into how organizations are navigating market volatility while advancing innovation and building resilient food systems.

Eve’s participation strengthened connections within the global food innovation ecosystem and provided valuable insight into trends and opportunities shaping the future of agri-food development. These learnings support strategic decision-making and reinforce the importance of positioning our region to engage in emerging food and agricultural innovation.

KEY TAKEAWAYS FOR OUR REGION

- **Value-Added Agriculture Potential:** Rising demand for alternative proteins creates opportunities for local producers and processors to participate in higher-value agri-food supply chains.
- **Collaboration Drives Growth:** Strong alignment between producers, researchers, industry, and policy is critical to advancing innovation and regional competitiveness.
- **Resilient Supply Chains Matter:** Investment in diversified crops, regenerative practices, and local processing can strengthen long-term economic and environmental resilience.
- **Innovation Attraction Opportunity:** Advances in food processing and protein technologies present opportunities to attract agri-food innovation, pilot projects, and investment.
- **Future-Ready Positioning:** Regions that proactively support sustainable food innovation are better positioned to capture long-term growth opportunities.

CEDI PARTNERSHIP

Throughout Q4, the Community Economic Development Initiative (CEDI) continued to focus on relationship-building, collaboration, and creating **meaningful economic and tourism opportunities** through cultural connection.

Central to this work was the **Prairie Unity Pow Wow**, which became a powerful example of how **partnership-driven initiatives** can foster inclusion, strengthen inter-community relationships, and generate tangible economic and tourism benefits for the Region of Portage la Prairie.



CEDI • IDEC



Portage la Prairie
City of Possibilities



The Prairie Unity Pow Wow was developed and delivered through **close collaboration** between Indigenous and non-Indigenous partners, CEDI committee members, community organizations, volunteers, and cultural leaders. Planning and execution emphasized respect, shared leadership, and open communication, creating a welcoming space for learning, celebration, and connection. These collaborative efforts strengthened **trust between communities** and reinforced the importance of working together toward shared economic and social goals.

From an economic development perspective, the Pow Wow generated increased visitation to the region, **supporting local** accommodations, restaurants, retail businesses, and service providers. Vendors, artisans, and food operators benefited directly from on-site sales, while the broader community experienced increased foot traffic and exposure. The event demonstrated the strong link between cultural programming and economic impact, highlighting the Pow Wow as both a community-building and **economic driver**. PRED will be completing the Economic Impact Assessment in the New Year.

Tourism impacts were also significant. The Prairie Unity Pow Wow attracted visitors from outside the region, province, and country, positioning Portage la Prairie as a welcoming destination for cultural tourism. The event **enhanced the region's profile** as a place where Indigenous culture is celebrated and respected, contributing to broader destination branding and visitor experience goals. Media coverage, social sharing, and photography further extended the reach of the event, encouraging future visitation and strengthening the region's reputation for inclusive and authentic experiences.



As CEDI moves forward, the success of the Prairie Unity Pow Wow underscores the importance of collaboration, relationship-based engagement, and cultural respect as foundational elements of **sustainable economic development**. By continuing to work together, leveraging partnerships, and aligning cultural initiatives with tourism and economic strategies, the Region of Portage la Prairie is well positioned to create lasting community impact and inclusive growth.

FOLLOW @PRAIRIEUNITYPOWWOW TO RELIVE THE HISTORIC EVENT



DAKOTA TIPI BUSINESS WORKSHOP

TURNING IDEAS INTO ACTION



In Q4, PRED partnered with Community Futures White Horse Plains & Heartland and Dakota Tipi First Nation to deliver the **Ready to Start Your Business?** workshop, supporting Indigenous entrepreneurship and business development within the region.

Hosted at the Dakota Tipi Round Room, the full-day session engaged 15 participants exploring pathways to **business start-up and growth**. Programming focused on access to capital, business validation, and market readiness, with presentations from Community Futures Indigenous Business Development Services and Futurpreneur. Participants were also introduced to local business development tools available, including Prairie Project Studio opportunities and Chamber of Commerce membership benefits. This initiative strengthened the **regional entrepreneurship ecosystem**, supported early-stage business development, and advanced PRED's strategic priority of fostering inclusive economic growth through **strong partnerships** with Indigenous communities.



READY TO START YOUR BUSINESS?

REGISTER NOW FOR FREE

DISCOVER

FUNDING, SUPPORT & RESOURCES
AVAILABLE TO START YOUR BUSINESS

FEATURING A PRESENTATION FROM
INDIGENOUS BUSINESS DEVELOPMENT SERVICES

Call the front desk secretary at
Dakota Tipi First Nation Band Office: **204-857-4381**
OR email: Clinton.Richard@dtfn.ca

Registration closes October 8th. Limited Spaces available.

LUNCH & DOOR PRIZES PROVIDED!

October 16th
10:00AM

DAKOTA TIPI FIRST NATION
ROUND ROOM

PROUDLY PRESENTED IN PARTNERSHIP BY

Community Futures White Horse Plains | PRED | Community Futures Manitoba | futurpreneur



CHECK OUT OUR NEW SALES SHEETS FOR INVESTMENT ATTRACTION



The Portage Advantage

CREATING AN ENVIRONMENT FOR SUCCESS

- CLOSE TO WINNIPEG INTERNATIONAL AIRPORT
- CLOSE PROXIMITY TO THE US BORDER
- ACCESS VIA TRANS-CANADA HIGHWAY
- CONNECT TO GLOBAL MARKETS

★★★★★
WORLD CLASS FOOD
NEIGHBORS

ROQUETTE
Offering the best of nature™

Simplot

www.investinportage.ca



The Portage Advantage

CREATING AN ENVIRONMENT FOR SUCCESS

- OVER 250 + ACRES OF INVESTMENT READY LAND
- THRIVING FAMILY-OWNED ENTERPRISE ECOSYSTEM
- AGRICULTURAL CENTRE OF EXCELLENCE
- DYNAMIC WET AND PROTEIN INDUSTRY CLUSTER PRESENT

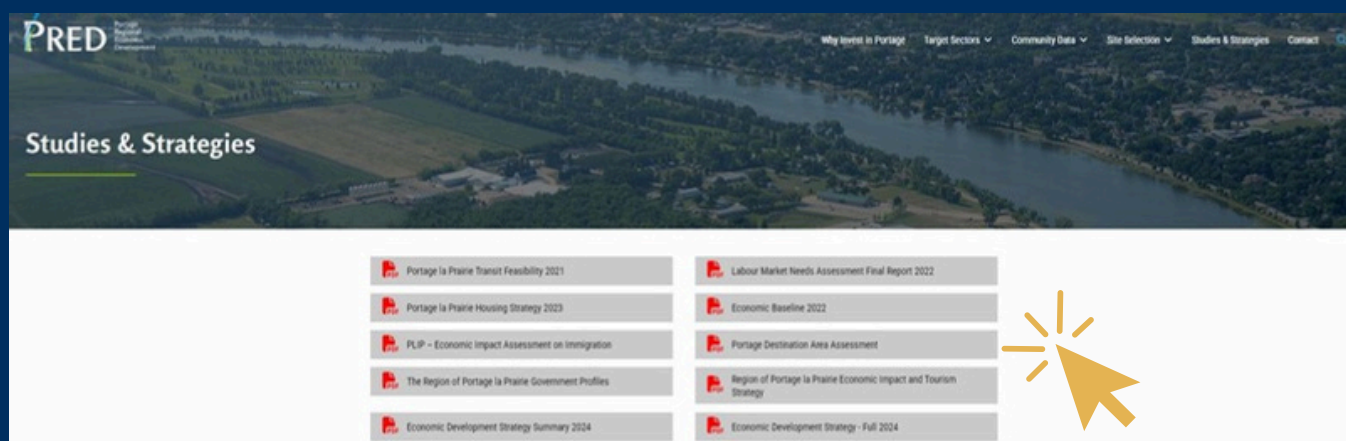


www.investinportage.ca

POPLAR BLUFF INDUSTRIAL PARK

MCMILLAN INDUSTRIAL PARK

STUDIES AND STRATEGIES



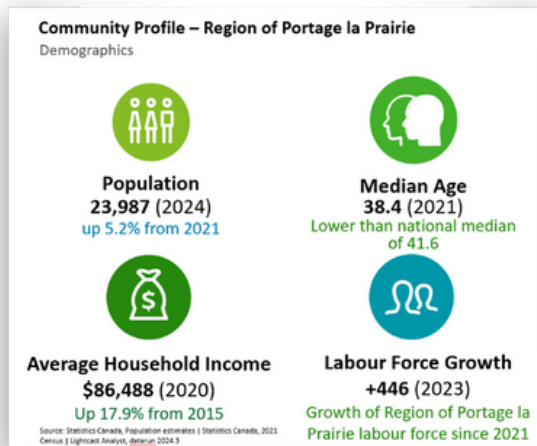
If you have a study or strategies you would like shared on this centralized library pertaining to our local economy and to better increase the knowledge of our community send us an email today - eoleary@investinportage.ca



ADVANCING THE REGION'S SOCIO-ECONOMIC FUTURE



Following the [Economic Baseline Report](#) and the [Immigration Readiness Assessment](#), PRED has completed the **Socio-Economic Impact Assessment** in partnership with Deloitte and Portage Local Immigration Partnership (PLIP) to support strategic economic development, investment attraction, and immigration planning. The assessment provides an updated economic and demographic baseline, evaluates immigration readiness, and introduces a new economic impact model to inform future decision-making.



The findings confirm **steady regional growth** and economic stability. Employment remains diversified and resilient, with strengths in food manufacturing, health care, education, and agriculture, supported by several highly concentrated sub-industries tied to value-added production and skilled trades.

The Immigration Readiness Assessment identified **strong performance** in housing inventory and educational opportunities, while highlighting opportunities to strengthen economic integration, employment pathways, and community and social supports. This baseline provides a clear framework to guide future workforce and settlement initiatives.



The project also delivered a customized economic impact model that enables PRED to assess the employment, GDP, labour income, and housing impacts of **major investment opportunities**. This tool strengthens the Region's ability to evaluate projects, respond to investor inquiries, and align growth with infrastructure and housing planning.

Project Outcome Summary				
The following are estimates derived from historical metrics across data utilizing the estimated project inputs. These estimates should not be treated as fact.				
Project Outputs			Project Inputs	
Employment	Local Employment	Direct Employment Indirect Employment Induced Employment Total	Select project type below and enter quantified project inputs. Please find the aggregated outcomes in the "Output" tab of this document.	
	Provincial Employment	Additional Employment Total	Project Name:	Project Year: 2025
	National Employment	Additional Employment Total	Project Type	
	Total Spending	Total provincial Spending Total National Spending Provincial GDP National GDP Provincial GDP	Value of Capital	Expenditure Share in Building Construction 100%
Economic Impact	GDP			Expenditure Share in Capital Machinery
Community Impacts	Housing Education Operating Phase	Revenue	Revenue Estimate	Total Expenditure Machinery (\$) 100%
		Employment	Employment Estimate	Employment (years)
			Workforce Share Filled by Existing Residents	
			Workforce Share Filled by New Migrants	
			Workforce Share Filled by Commuters	100%
	Immigrant Share of Total Migrants to Portage Region			

Read more PRED Studies & Strategies [HERE](#).

OVERALL, THE ASSESSMENT REINFORCES THE REGION OF PORTAGE LA PRAIRIE'S POSITION AS AN INVESTMENT-READY COMMUNITY AND PROVIDES ACTIONABLE INSIGHTS AND TOOLS TO SUPPORT SUSTAINABLE ECONOMIC GROWTH.

REGIONAL TOURISM

A DESTINATION MANAGEMENT UPDATE:

Q4 demonstrated that **tourism growth** is built year-round through collaboration, storytelling, and preparation. The quarter **strengthened** partnerships, **elevated** cultural leadership, and laid important groundwork for 2026.



STRATEGIC PARTNERSHIPS & STAKEHOLDER ENGAGEMENT

- Active membership and attendance with the Tourism Industry Association of Manitoba (TIAM) **ensured alignment** with provincial tourism priorities and strengthened the Region's presence within Manitoba's tourism network.
- Collaboration with Travel Manitoba, sport tourism partners, event organizers, accommodations, and local businesses positioned us as a cooperative and **opportunity-ready** destination.
- Growing relationships with Indigenous neighbours and partners remained a meaningful focus, supporting more inclusive, respectful, and **authentic tourism experiences** across the Region.

Tourism Industry Association of
Manitoba

EVENTS, CULTURE & COMMUNITY PRIDE

- The Prairie Unity Pow Wow marked a **historic milestone** as the first event of its kind hosted in Portage la Prairie. The Pow Wow attracted participants and visitors from across the province, generating positive regional visibility while strengthening cultural understanding and reconciliation through action.
- Continued promotion of community events and seasonal programming reinforced the Region as a welcoming, year-round destination **rooted in connection** and pride.



MARKETING & BRAND STORYTELLING

- Digital and social media storytelling highlighted people, events, and **regional pride**, contributing to steady audience growth.
- The "Island on the Prairies" narrative continued to resonate, helping **shift perception** toward the Region as a place to stop, stay, and experience.

FOCUS AREAS MOVING FORWARD INCLUDE EXPANDING PARTNERSHIPS, ATTRACTING SPORT AND CULTURAL EVENTS, DEEPENING INDIGENOUS COLLABORATION, AND LEVERAGING MOMENTUM TO SUPPORT SUSTAINABLE, FOUR-SEASON TOURISM GROWTH.






Sincere thanks to the City & Rural Municipality of Portage la Prairie, Planning District, PRED Board and Staff, and the PRTC Committee for their continued support and collaboration. Your shared commitment makes the Region a genuine pleasure to promote.

DISCOVER MORE IN OUR REGION HERE:



Q4 ONLINE ENGAGEMENT & AWARENESS

@DISCOVERPORTAGELAPRAIRIE HAS RECEIVED A COMBINED TOTAL OF 19,728 VIEWS IN Q4 AND CONTINUES TO GAIN MOMENTUM WITH FOLLOWERS.

Title	Reach	Views
 Something new to Discover at Prairie Flo... Photo • Discover Portage la Prairie	3,714	5,287
 A First for Our Region. A Celebration for Eve... Multi media • Discover Portage la Prairie	1,815	3,526
 ALL ABOARD! The Portage Model Railro... Multi media • Discover Portage la Prairie	1,234	1,932
 Experience Holiday Magic: Once Upon a For... Reel • Discover Portage la Prairie	567	697
 Experience the holidays in a whole new way. ... Photo • Discover Portage la Prairie	387	524

Facebook followers

6,674

Higher than others

Typically: 922

Instagram followers

825

Similar to others

Typically: 716

WITH OUR ELEVATED ANALYTICS FOR INVESTINPORTAGE.CA, PRED HAS SEEN AN INCREASE FROM INTERNATIONAL WEBSITE TRAFFIC TO AID IN FOREIGN DIRECT INVESTMENT ATTRACTION. Q4 ALSO SHOWS AN INCREASE OF INTEREST TOWARDS OUR AGRI-FOOD SECTOR WITH 217 PAGE VIEWS, FOLLOWED BY 157 EYES ON OUR WHY INVEST IN PORTAGE PAGE.

COUNTRY	ACTIVE USERS
China	645
Canada	313
Singapore	262
United States	143
Barbados	120
Germany	45
Netherlands	10

Top Posts/Pages

1. Home - Portage Regional Economic Development	342
2. Portage Regional Economic DevelopmentHome - Portage Regional Economic Development	247
3. Agri-Food Sector - Portage Regional Economic Development	135
4. Why invest in Portage - Portage Regional Economic Development	107
5. Portage Regional Economic DevelopmentAgri-Food Sector - Portage Regional Economic Development	82
6. Portage Regional Economic DevelopmentWhy Invest in Portage - Portage Regional Economic Development	50
7. Regional Land Inventory - Portage Regional Economic Development	41
8. Portage Regional Economic DevelopmentAbout Us - Portage Regional Economic Development	32
9. Contact - Portage Regional Economic Development	32
10. The Portage Advantage - Portage Regional Economic Development	29

CITY	ACTIVE USERS
Lanzhou	642
Singapore	256
Saint Michael	116
Toronto	106
Winnipeg	67
Portage la Prairie	36
Columbus	15

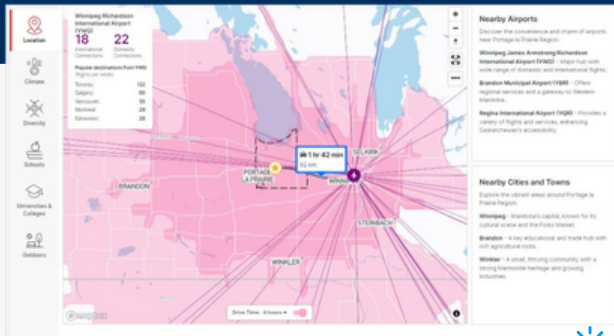


DON'T MISS OUT FOLLOW US



DO YOU NEED DATA?

LOCATION



CLIMATE

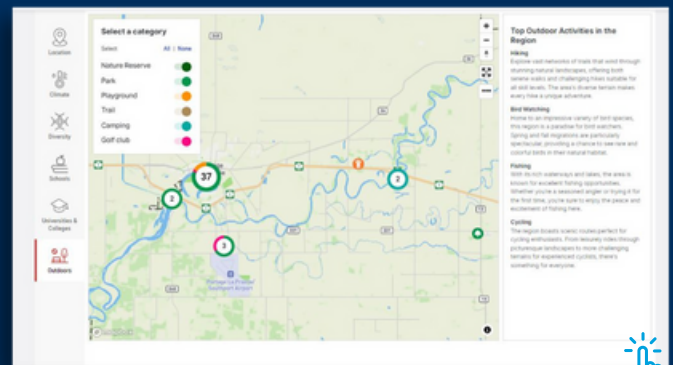


DIVERSITY



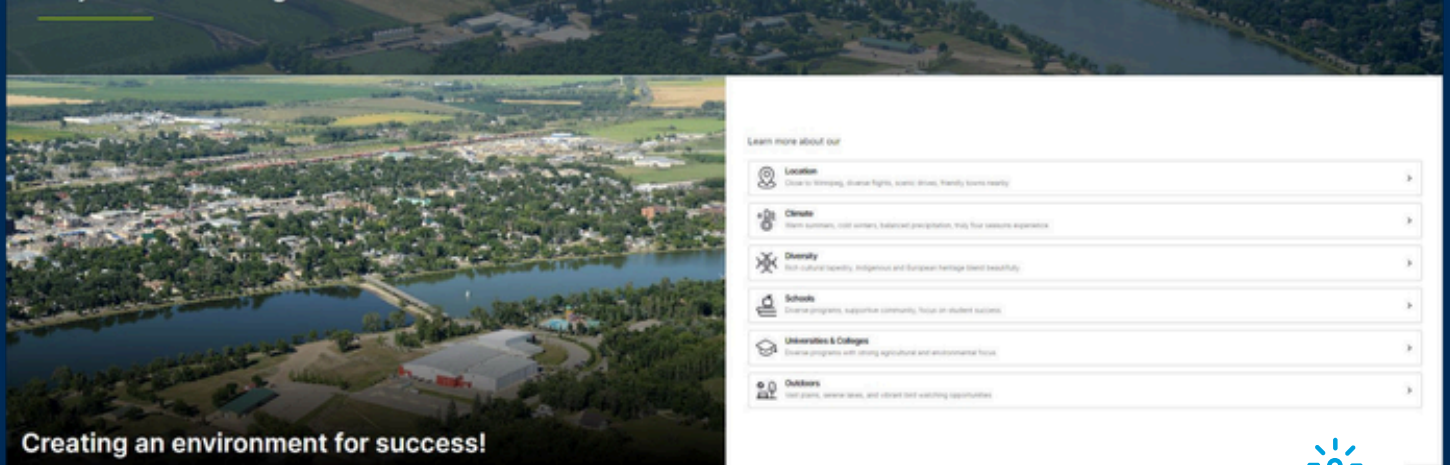
ACCESS TO DATA IS IMPORTANT TO BENCHMARK THE **SUCCESS OF THE COMMUNITY** AND TO ALLOW OUR BUSINESS COMMUNITY TO GROW.

TOP OUTDOOR ACTIVITIES



Connect with PRED for **free** Environmental Scans and **economic indicators reports** on the region customized to your business or organizations needs!

Why Invest in Portage



INVESTINPORTAGE.CA

PRED THREADS

Q4 CONNECTIONS & PARTNERSHIPS

Prairie Unity Powwow committee puts the "unity in community"

Tyler Baez, PortageOnline.com | Thursday, Dec 19 2025, 12:00 PM

Share:   



Committee members stand together, showing off the new flag for the upcoming Prairie Unity Powwow. PORTAGEONLINE / TYLER BAEZ



The Graduation Ceremony was held on Thursday October 30, 2025 for 40 Technician in Aboriginal Economic Developer (TAED) and 4 Professional Aboriginal Economic Developer (PAED) graduates. Congratulations to all the Economic Developers that worked so hard to earn their designations.



The Grand entry on Saturday night / Photo: Gayle Loewens/loewen photography

Marketing and vendor coordinator Callie McArthur said being part of the committee was a meaningful experience, one that culminated in her being presented with a star blanket during Saturday evening's grand entry. "Just even being asked to be on this committee was huge," McArthur said. "Seeing the passion and the work that goes into planning a pow wow is incredible."

She said the star blanket presentation left a lasting impression. "I was shocked. I was absolutely honored, and I'm just so humbled to be included and accepted," she said. "It truly shows what the partnership has been all about."

McArthur
truth
work
Portage

Economic development and partnerships

Meier emphasises the role of the Portage Regional Economic Development Department (PRED) in supporting local growth.

"We've expanded the PRED department. It's a department of three now. I think the biggest story in that aspect is that we've got a dedicated tourism coordinator who is looking just at that aspect," he remarks.

Events like the Unity Powwow demonstrate the success of regional collaboration.

"Hotels were full, people from all over, not only Canada, but parts of the US and everything else that came in. It was just a great three-day event," Meier adds.

Research and future initiatives

Tilk says that research is also a critical part of the partnership's work, identifying ongoing challenges newcomers face and pointing to projects that could make a meaningful difference in the coming years.

"Another important aspect of the work we do is research, and we've recently completed a study in partnership with PRED that outlines some of the gaps newcomers are still experiencing in the community, and offers insights into relatively small, meaningful projects that we hope to initiate in the coming years that we hope will go a long way towards filling some of those gaps," says Tilk. "The full report can be found on PRED's website if anybody is interested."

LOCAL NEWS

Trailblazing winter Pow Wow will promote reconciliation and unity

Written by Maryssa McArthur, Monday, Oct 20 2025, 5:00 AM

Share:   



Some of the members of the Prairie Unity Pow Wow committee gathered to celebrate the upcoming event, showcasing the collaboration between Long Plain First Nation, Dakota Plains Wapiniton Nation, and the City of Portage to Prairie. PORTAGEONLINE/MARYSSA MCARTHUR

LET'S WORK TOGETHER TO GROW YOUR BUSINESS!

LET'S BEGIN!



PRED meets and takes information requests from many businesses each month. If you would like a visit or information about the economic pulse of the Region connect today.

CHECK OUT OUR FAQ SECTION



www.investinportage.ca



204 - 856 - 5000



Investinportage



eoleary@investinportage.ca



**CLICK HERE TO BE ADDED TO OUR MAILING LIST AND
RECEIVE YOUR QUARTERLY REPORTS**